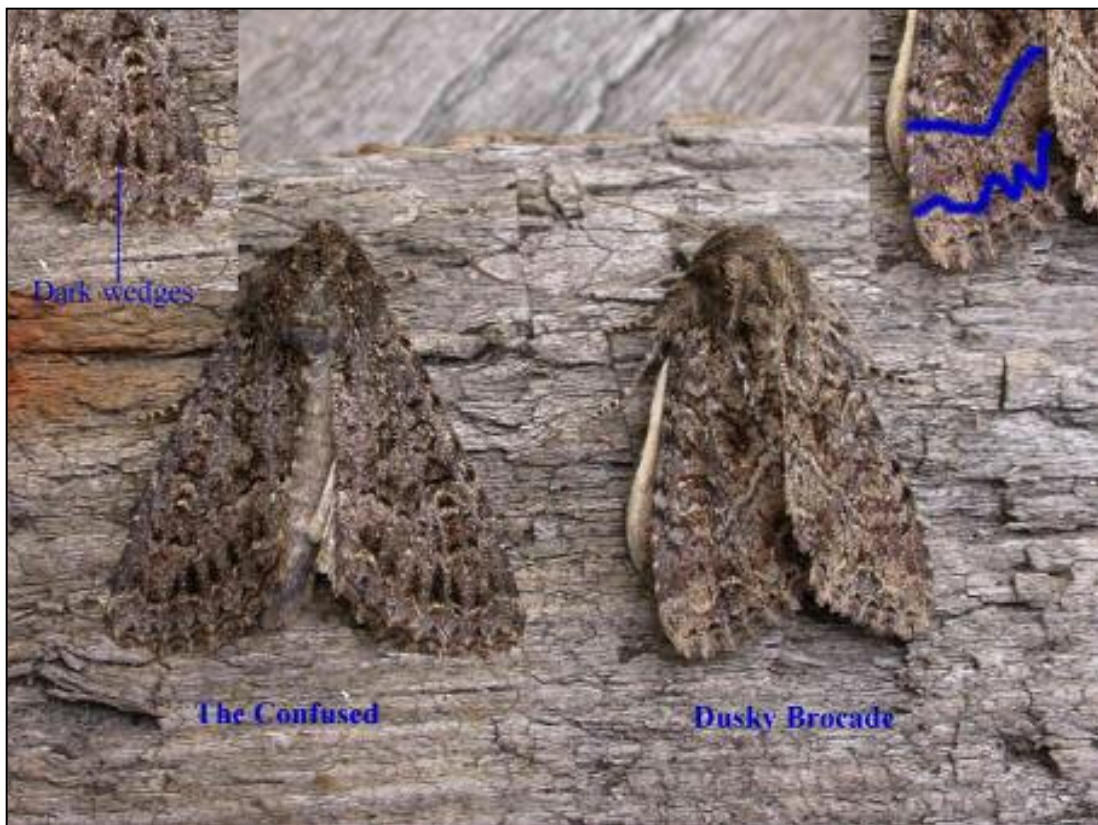


SEPARATION OF THE CONFUSED *Apamea furva* AND DUSKY BROCADE
Apamea remissa

Much discussion and deliberation has centred on these two difficult moths and despite text in Bernard Skinner's Guide to The Moths of the British Isles, Waring & Townsend's Field Guide to the Moths of Great Britain and Ireland and an article in Atropos concentrating on the separation of Northern Arches and confusion species (Atropos 5 p.43), recorders still find separation of the two rather difficult.

I have set out here to show the main differences with aid to pictures of the two side by side for direct comparison. In the first picture of the two taken from above the main differences are *furva* showing dark wedge shaped markings which is lacking or faint on *remissa* and the reniform stigma being much smaller with a dark spot in the centre. Further separation lies in the **W** tooth mark along the subterminal fascia in *remissa* being much more pronounced and the postmedian fascia being more distinct (outlined in blue)

The second picture taken from below highlights the two dark narrow bands on the underside of the hindwing, a feature given for *furva* in Waring & Townsend. Although this feature is good for most individuals it is not constant so caution is needed here. A male *remissa* taken on Shetland in August 2005 showed just this feature.





Jon Clifton
Kestrel Cottage
Hindolveston
Norfolk