

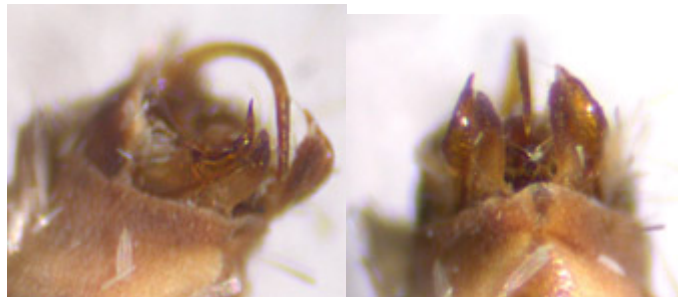
**SEPARATION OF RED TWIN-SPOT AND DARK-BARRED TWIN-SPOT CARPETS  
(*Xanthorhoe spadicearia* and *Xanthorhoe ferrugata*)- ColinPlant**

Reproduced by kind permission of the author from:  
Plant, C. W., 2005. Separation of Red Twin-spot *Xanthorhoe spadicearia* (D.&S.) and  
Dark-barred Twin-spot Carpet (*Xanthorhoe ferrugata* (CL.) (Lep.:Geometridae).  
*Entomologist's Record and Journal of Variation* 117: 177 - 180.



**Tip of abdomen of Red Twin-spot Carpet *Xanthorhoe spadicearia***

The long, curved spines extend well beyond the tips of the valves (which protrude from the abdomen on the inner face of the spines) and they curve strongly, often overlapping. The long, narrow and curved uncus is scarcely visible here because it is photographed - head on- between the two spines.



**Tip of abdomen of Dark-barred Twin-spot Carpet *Xanthorhoe ferrugata***

The left image is from below - the same view as that of the Red Twin-spot Carpet. The right hand image is from below and to the left, giving a better view of the short, curved spines that are only slightly longer than the valves against which they rest. Do not confuse the single very long, narrow and curved uncus (identical in both species) which arises from the upper surface with the two spines arising from the valves on the lower surface.